

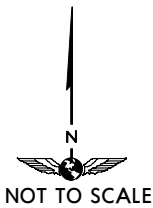
EDLIR 1B [EDLI1B]
 GEKRA 1A [GEKR1A]
 GEKRA 1B [GEKR1B]
 ITSOS 1A [ITSO1A]
 ITSOS 1B [ITSO1B]
 KABRA 1A [KABR1A]
 RWYS 19, 01 DEPARTURES
 LETTER A & B ASSIGNED SIDS TO
 NORTH & EAST
 FOR LETTER N & S ASSIGNED SIDS
 TO NORTH & EAST REFER TO
 CHART 10-3C

Initial climb clearance 4000'

SID	RWY	ROUTING
EDLIR 1B	19	Climb on runway heading, intercept CVS R-192 to D8 CVS, turn LEFT, along CVS 12 DME arc until CVS R-122, then to EDLIR.
GEKRA 1A	01	Climb on runway heading, intercept CVS R-012 to D8 CVS, turn RIGHT, along CVS 12 DME arc until CVS R-070, then to GEKRA.
GEKRA 1B	19	Climb on runway heading, intercept CVS R-192 to D8 CVS, turn LEFT to GEKRA.
ITSOS 1A	01	Climb on runway heading, intercept CVS R-012 to D8 CVS, turn RIGHT, along CVS 12 DME arc until CVS R-070, then to ITSOS.
ITSOS 1B	19	Climb on runway heading, intercept CVS R-192 to D8 CVS, turn LEFT to ITSOS.
KABRA 1A	01	Climb on runway heading, intercept CVS R-012 to D8 CVS, turn RIGHT to KABRA.

Apt Elev 177' Trans level: By ATC Trans alt: 6000'

BRITO 1A [BRIT1A]
 BRITO 1B [BRIT1B]
 UNOSU 1A [UNOS1A]
 UNOSU 1B [UNOS1B]
 RWYS 01, 19 DEPARTURES
 LETTER A & B ASSIGNED SIDS TO
 SOUTH
 FOR LETTER N & S ASSIGNED SIDS
 TO SOUTH REFER TO
 CHART 10-3D



MAX 210 KT along Arc

10 DME Arc

D8 CVS
 N16 52.2
 W022 57.1

SAL
 P 115.3 CVS
 N16 44.2 W022 57.1

7
 192° 012'

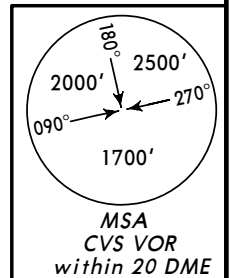
D15 CVS
 N16 29.1
 W022 57.1

166
 BRITO 1A
 162
 UNOSU 1A

141
 BRITO 1B
 136
 UNOSU 1B

BRITO
 N14 28.4
 W024 12.6

UNOSU
 N14 28.8 W024 03.3

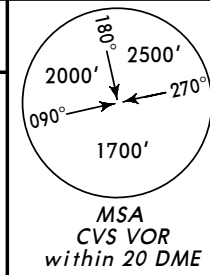


Initial climb clearance 4000'

SID	RWY	ROUTING
BRITO 1A	01	Climb on runway heading, intercept CVS R-012 to D8 CVS, turn LEFT, along CVS 10 DME arc until CVS R-300, then to BRITO.
BRITO 1B	19	Climb on runway heading, intercept CVS R-192 to D15 CVS, turn RIGHT to BRITO.
UNOSU 1A	01	Climb on runway heading, intercept CVS R-012 to D8 CVS, turn LEFT, along CVS 10 DME arc until CVS R-300, then to UNOSU.
UNOSU 1B	19	Climb on runway heading, intercept CVS R-192 to D15 CVS, turn RIGHT to UNOSU.

Apt Elev
 177'

Trans level: By ATC Trans alt: 6000'



VANDA 1A [VAND1A], VOTOL 1B [VOTO1B]
 RWYS 01, 19 DEPARTURES
 LETTER A & B ASSIGNED SIDS
 TO WEST
 FOR LETTER N & S ASSIGNED SIDS
 TO WEST REFER TO
 CHART 10-3E

VANDA ▲
 N17 36.3 W023 38.9

59
 VANDA 1A

VOTOL ▲
 N17 30.6 W024 02.1

D8 CVS X
 N16 52.2
 W022 57.1

SAL
 P 115.3 CVS
 N16 44.2 W022 57.1

7
 012°
 7
 192°

MAX 210 KT along Arc

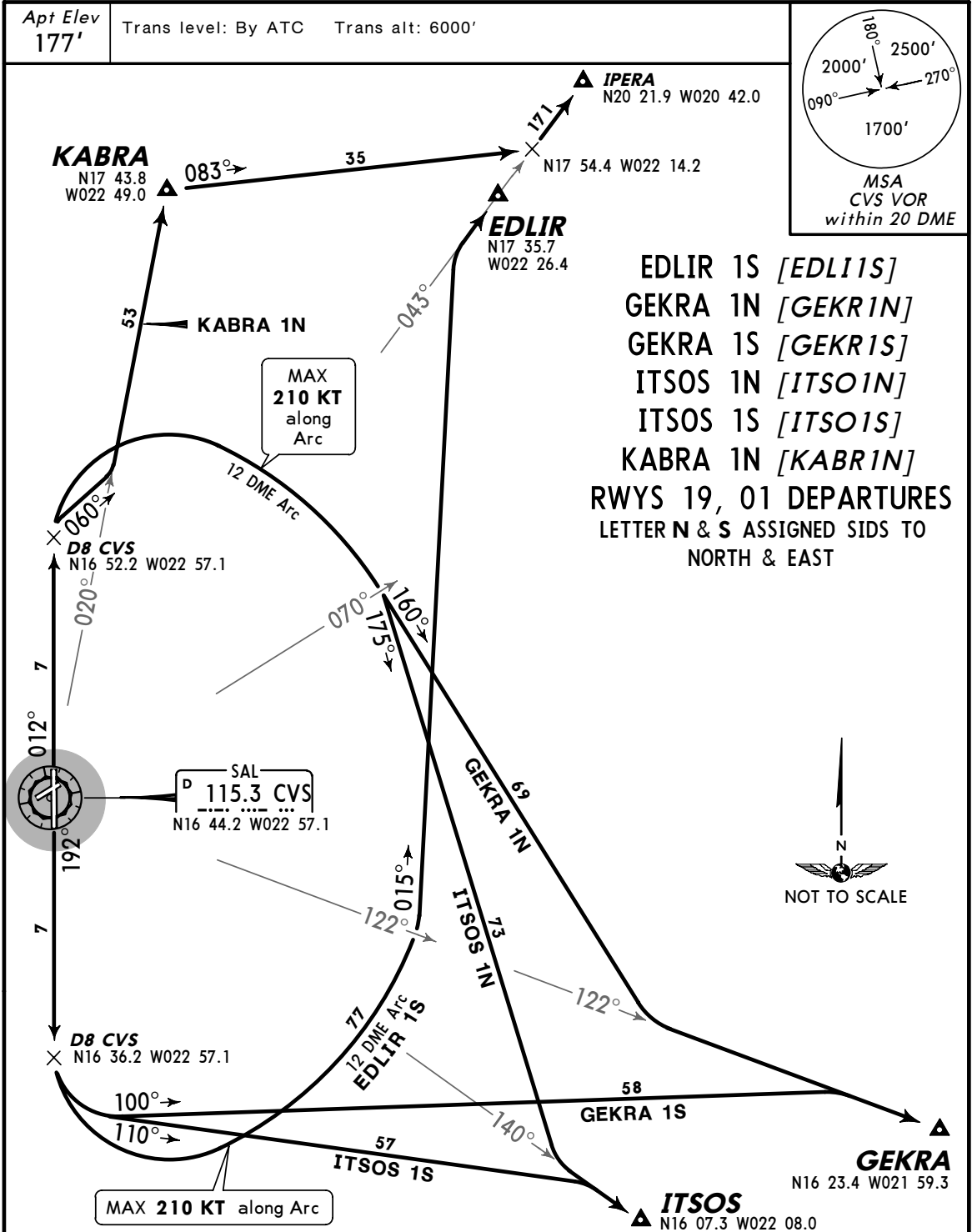
D8 CVS X
 N16 36.2
 W022 57.1



88
 12 DME Arc
 VOTOL 1B

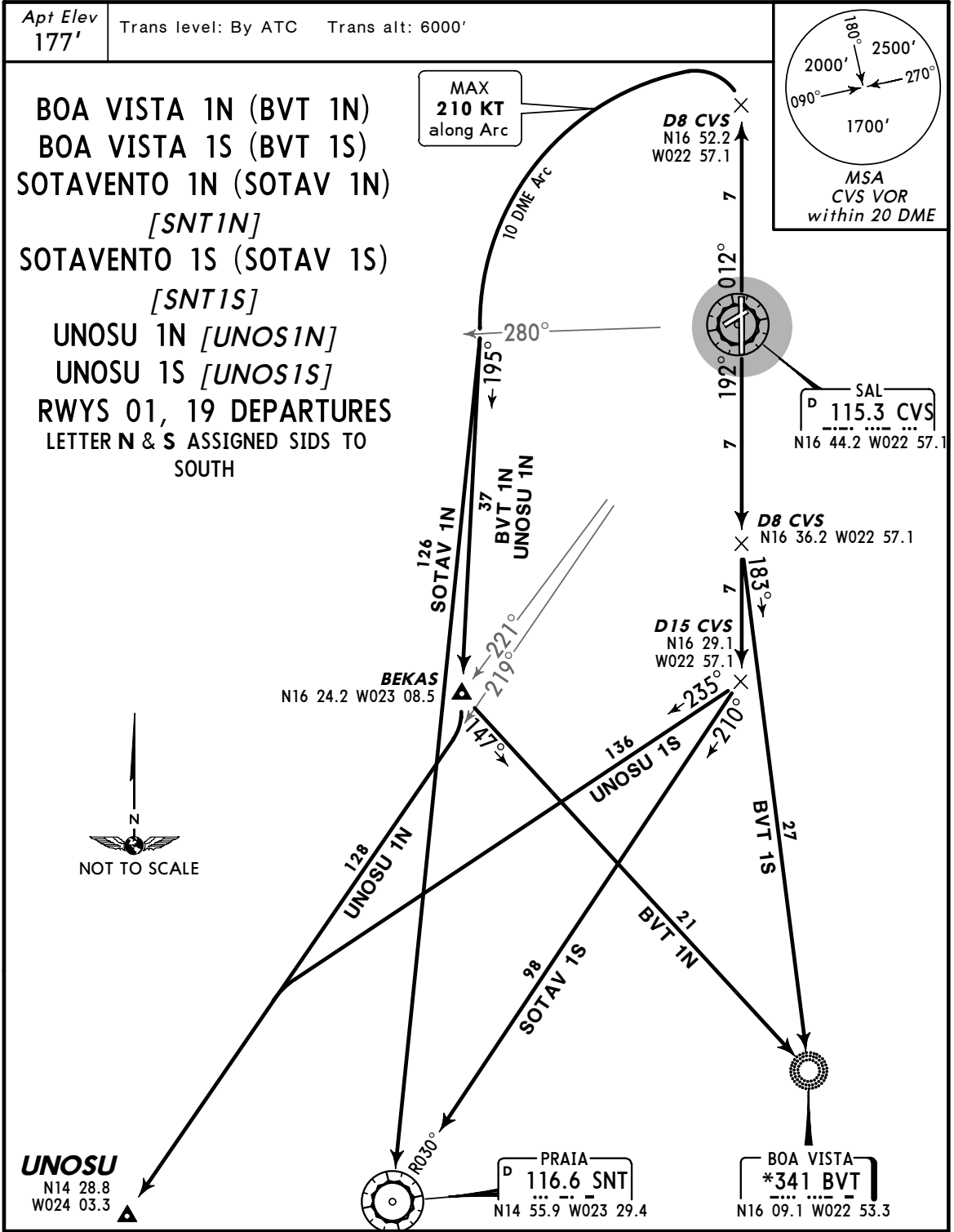
Initial climb clearance 4000'

SID	RWY	ROUTING
VANDA 1A	01	Climb on runway heading, intercept CVS R-012 to D8 CVS, turn LEFT to VANDA.
VOTOL 1B	19	Climb on runway heading, intercept CVS R-192 to D8 CVS, turn RIGHT, along CVS 12 DME Arc to CVS R-240, turn LEFT to VOTOL.



Initial climb clearance 4000'

SID	RWY	ROUTING
EDLIR 1S	19	Climb on runway heading, intercept CVS R-192 to D8 CVS, turn LEFT, along CVS 12 DME arc to CVS R-122, 015° track, intercept CVS R-043 to EDLIR.
GEKRA 1N	01	Climb on runway heading, intercept CVS R-012 to D8 CVS, turn RIGHT, along CVS 12 DME arc, at CVS R-070 turn LEFT, 160° track, intercept CVS R-122 to GEKRA.
GEKRA 1S	19	Climb on runway heading, intercept CVS R-192 to D8 CVS, turn LEFT, 100° track, intercept CVS R-122 to GEKRA.
ITSOS 1N	01	Climb on runway heading, intercept CVS R-012 to D8 CVS, turn RIGHT, along CVS 12 DME arc to CVS R-070, 175° track, intercept CVS R-140 to ITSOS.
ITSOS 1S	19	Climb on runway heading, intercept CVS R-192 to D8 CVS, turn LEFT, 110° track, intercept CVS R-140 to ITSOS.
KABRA 1N	01	Climb on runway heading, intercept CVS R-012 to D8 CVS, turn RIGHT, 060° track, intercept CVS R-020 to KABRA, turn RIGHT, 083° track, intercept CVS R-043 to IPERA.



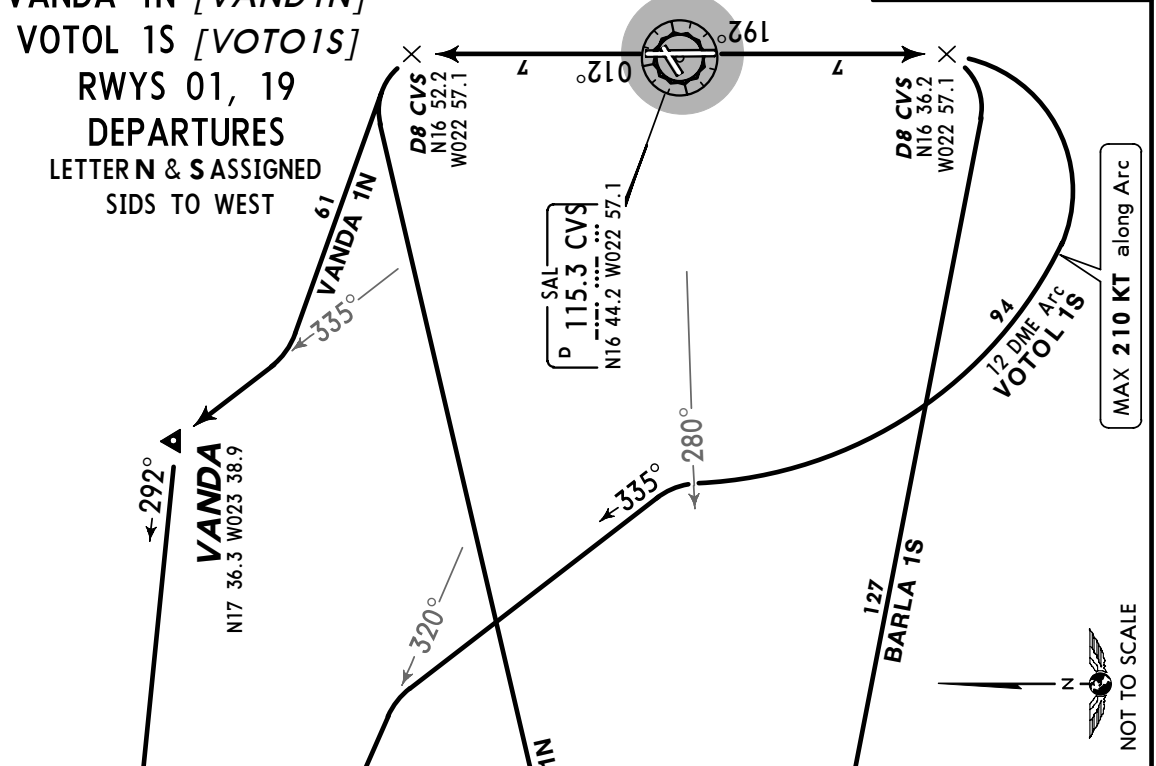
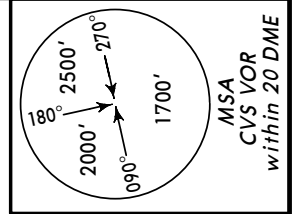
Initial climb clearance 4000'

SID	RWY	ROUTING
BVT 1N	01	Climb on runway heading, intercept CVS R-012 to D8 CVS, turn LEFT, along CVS 10 DME arc, at CVS R-280 turn RIGHT, 195° track to BEKAS (CVS R-221), then to BVT.
BVT 1S	19	Climb on runway heading, intercept CVS R-192 to D8 CVS, turn LEFT to BVT.
SOTAV 1N	01	Climb on runway heading, intercept CVS R-012 to D8 CVS, turn LEFT, along CVS 10 DME arc, at CVS R-280 turn RIGHT to SNT.
SOTAV 1S	19	Climb on runway heading, intercept CVS R-192 to D15 CVS, turn RIGHT to SNT.
UNOSU 1N	01	Climb on runway heading, intercept CVS R-012 to D8 CVS, turn LEFT, along CVS 10 DME arc, at CVS R-280 turn RIGHT, 195° track to BEKAS (CVS R-221), intercept CVS R-219 to UNOSU.
UNOSU 1S	19	Climb on runway heading, intercept CVS R-192 to D15 CVS, turn RIGHT, 235° track, intercept CVS R-219 to UNOSU.

Apt Elev
177'

Trans level: By ATC Trans alt: 6000'

BARLAVENTO 1N
(BARLA 1N)[SVT1N]
BARLAVENTO 1S
(BARLA 1S)[SVT1S]
VANDA 1N [VAND1N]
VOTOL 1S [VOTO1S]
RWYS 01, 19
DEPARTURES
LETTERN & S ASSIGNED
SIDS TO WEST



Initial climb clearance 4000'		ROUTING
SID	RWY	
BARLA 1N	01	Climb on runway heading, intercept CVS R-012 to D8 CVS, turn LEFT to SVT.
BARLA 1S	19	Climb on runway heading, intercept CVS R-192 to D8 CVS, turn RIGHT to SVT.
VANDA 1N	01	Climb on runway heading, intercept CVS R-012 to D8 CVS, turn LEFT, intercept CVS R-335 to VANDA, turn LEFT, 292° track, intercept CVS R-320 to GAMBA.
VOTOL 1S	19	Climb on runway heading, intercept CVS R-192 to D8 CVS, turn RIGHT, along CVS 12 DME Arc, at CVS R-280 turn LEFT, 335° track, intercept CVS R-320 to VOTOL.

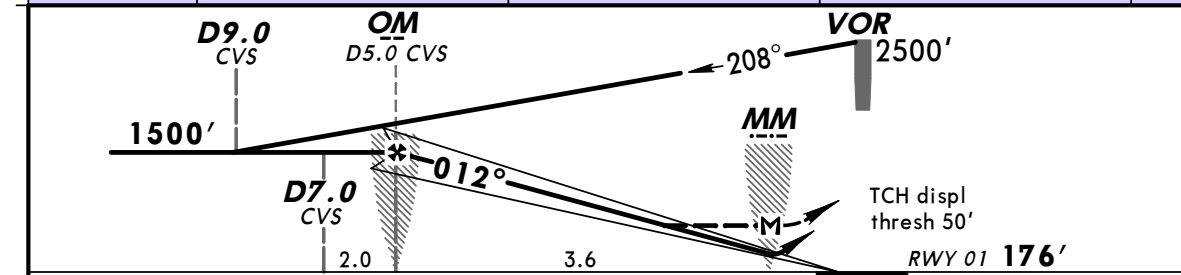
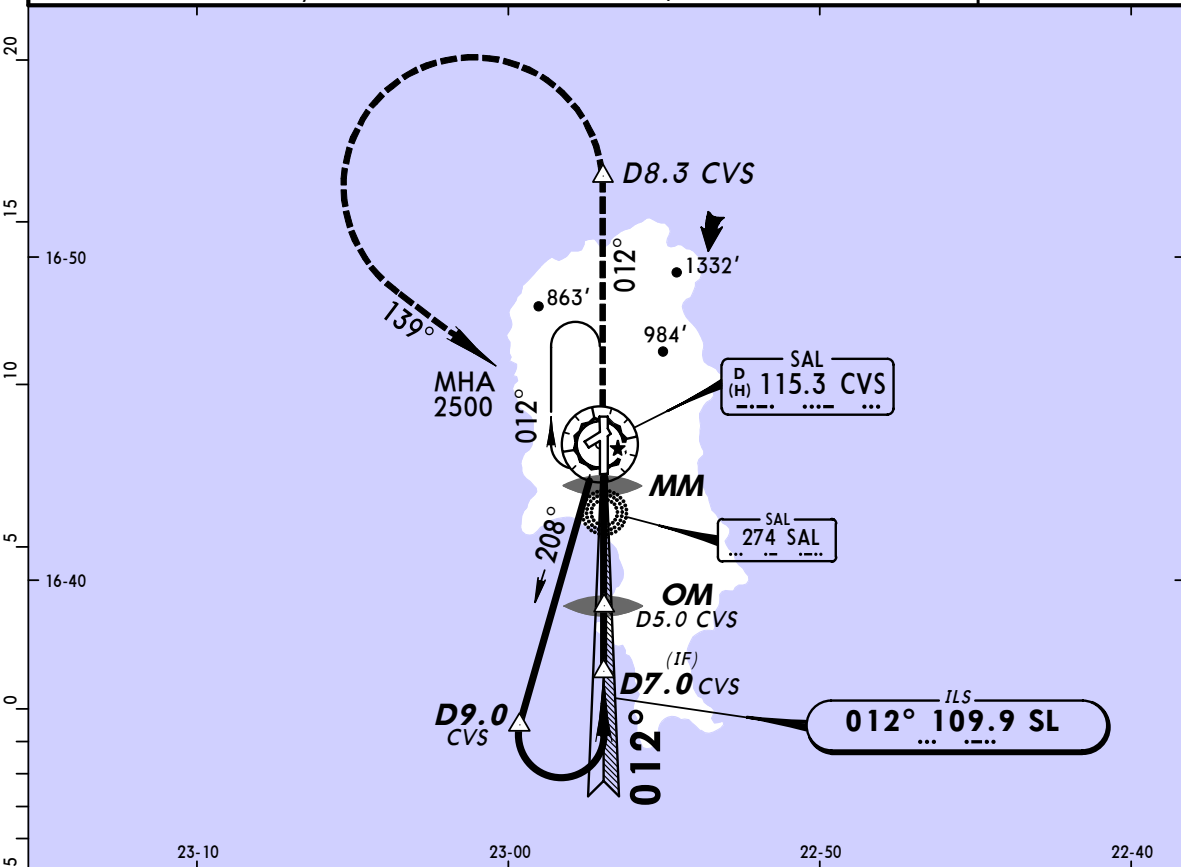
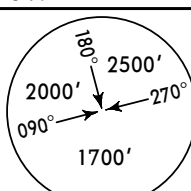
STRAIGHT-IN RWY		A	B	C	D
01	VOR ILS	378' (202')	378' (202')	378' (202')	378' (202')
		R600m	R600m	R600m	R600m
	<i>ALS out</i>	R1000m	R1000m	R1000m	R1000m
	LOC	540' (364')	540' (364')	540' (364')	540' (364')
		R900m	R1000m	R1000m	R1400m
	<i>ALS out</i>	R1500m	R1500m	R1800m	R2000m
	NDB ILS	378' (202')	378' (202')	378' (202')	378' (202')
		R600m	R600m	R600m	R600m
	<i>ALS out</i>	R1000m	R1000m	R1000m	R1000m
	LOC	540' (364')	540' (364')	540' (364')	540' (364')
		R900m	R1000m	R1000m	R1400m
	<i>ALS out</i>	R1500m	R1500m	R1800m	R2000m
VOR DME	540' (363')	540' (363')	540' (363')	540' (363')	
	R900m	R1000m	R1000m	R1400m	
<i>ALS out</i>	R1500m	R1500m	R1800m	R2000m	
NDB	550' (373')	550' (373')	550' (373')	550' (373')	
	R900m	R1000m	R1000m	R1400m	
<i>ALS out</i>	R1500m	R1500m	R1800m	R2000m	
19	VOR DME	720' (550')	720' (550')	720' (550')	720' (550')
		R1500m	R1500m	R1800m	R2000m
	<i>ALS out</i>	R1500m	R1500m	R2000m	R2000m

CIRCLE-TO-LAND	100 KT	135 KT	180 KT	205 KT
West of rwy	930' (753')	930' (753')	1460' (1283')	1460' (1283')
East of rwy	930' (753')	1070' (893')	1560' (1383')	1930' (1753')
	V1500m	V1600m	V2400m	V3600m

TAKE-OFF RWY 01, 19				
LVP must be in Force				
	RL & CL	RCLM (DAY only) or RL	RCLM (DAY only) or RL	NIL (DAY only)
A				
B	200m	250m	400m	500m
C				
D	250m	300m		

TAKE-OFF RWY 07, 25			
LVP must be in Force			
	RCLM (DAY only) or RL	RCLM (DAY only) or RL	NIL (DAY only)
A			
B	250m	400m	500m
C			
D	300m		

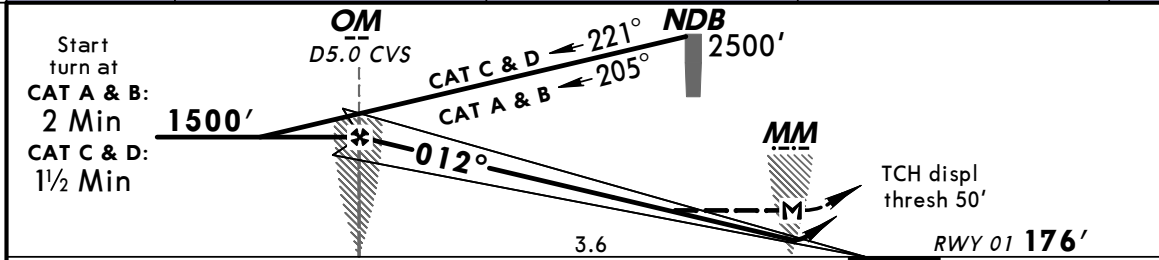
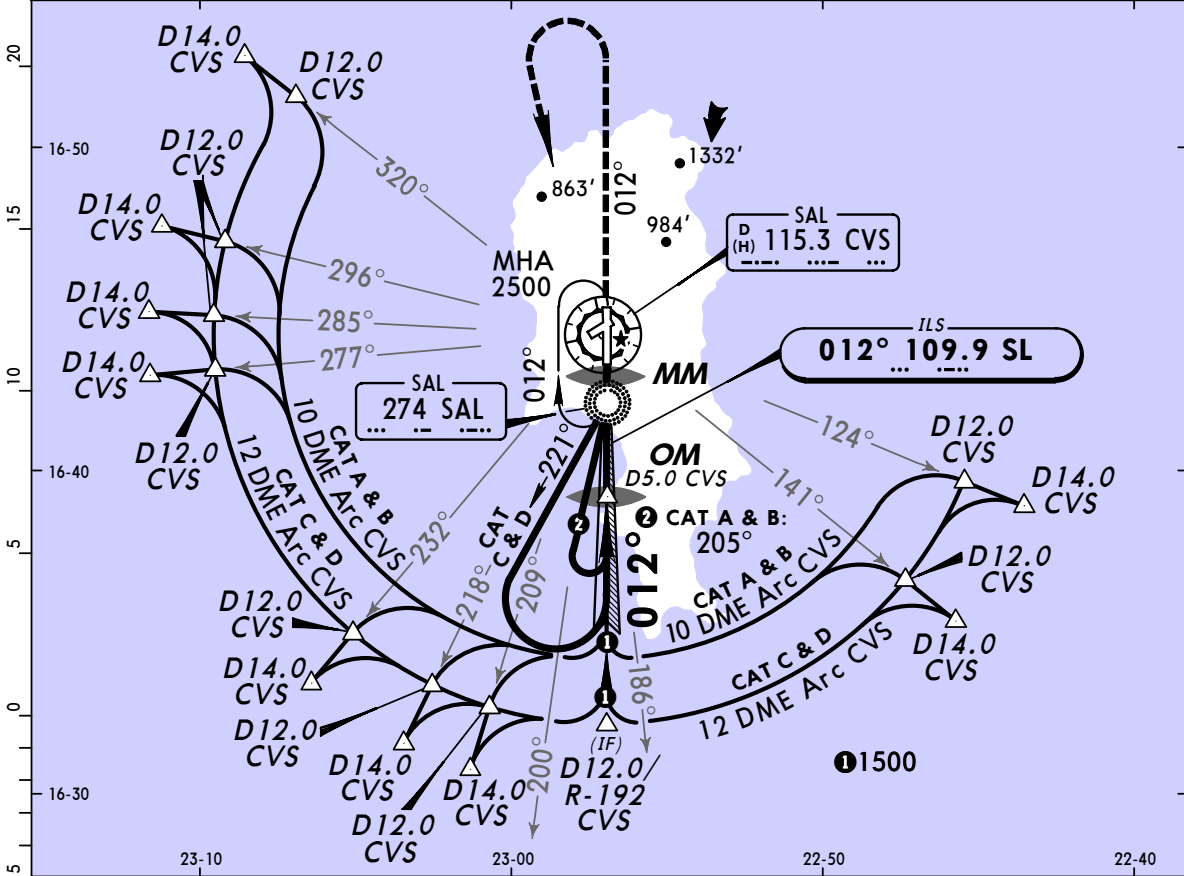
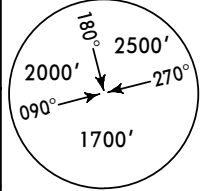
ATIS 119.1		SAL Approach (R) 119.7			AMILCABRAL Tower 119.7	
LOC SL 109.9	Final Apch Crs 012°	GS OM 1500' (1324')	ILS DA(H) 378' (202')	Apt Elev 177'	RWY 176'	
MISSED APCH: Climb to 2500', maintain rwy heading to D8.3 CVS, then turn LEFT back to VOR.						
Alt Set: hPa		Rwy Elev: 6 hPa	Trans level: By ATC		Trans alt: 6000'	
						MSA CVS VOR



TO DISPLACED THRESHOLD							<table border="1"> <tr> <td>HIALS</td> <td>2500'</td> <td>on</td> <td>RWY</td> <td>D8.3</td> </tr> <tr> <td>PAPI</td> <td>↑</td> <td></td> <td>hdg</td> <td>CVS</td> </tr> </table>	HIALS	2500'	on	RWY	D8.3	PAPI	↑		hdg	CVS
HIALS	2500'	on	RWY	D8.3													
PAPI	↑		hdg	CVS													
Gnd speed-Kts	70	90	100	120	140	160											
ILS GS 3.00° or LOC Descent Gradient 5.2%	377	484	538	646	753	861											
MAP at MM																	

STRAIGHT-IN LANDING RWY 01					CIRCLE-TO-LAND			
ILS DA(H) 378' (202')		LOC (GS out) MDA(H) 540' (364')			West of rwy		East of rwy	
FULL		ALS out		MM out	ALS out		Max Kts	
A					100	930' (753') 1600m	930' (753') 1600m	
B					135	930' (753') 2000m	1070' (893') 2000m	
C	800m	1200m		NOT AUTH	180	1460' (1283') 4800m	1560' (1383') 4800m	
D			1200m		205		1930' (1753') 4800m	

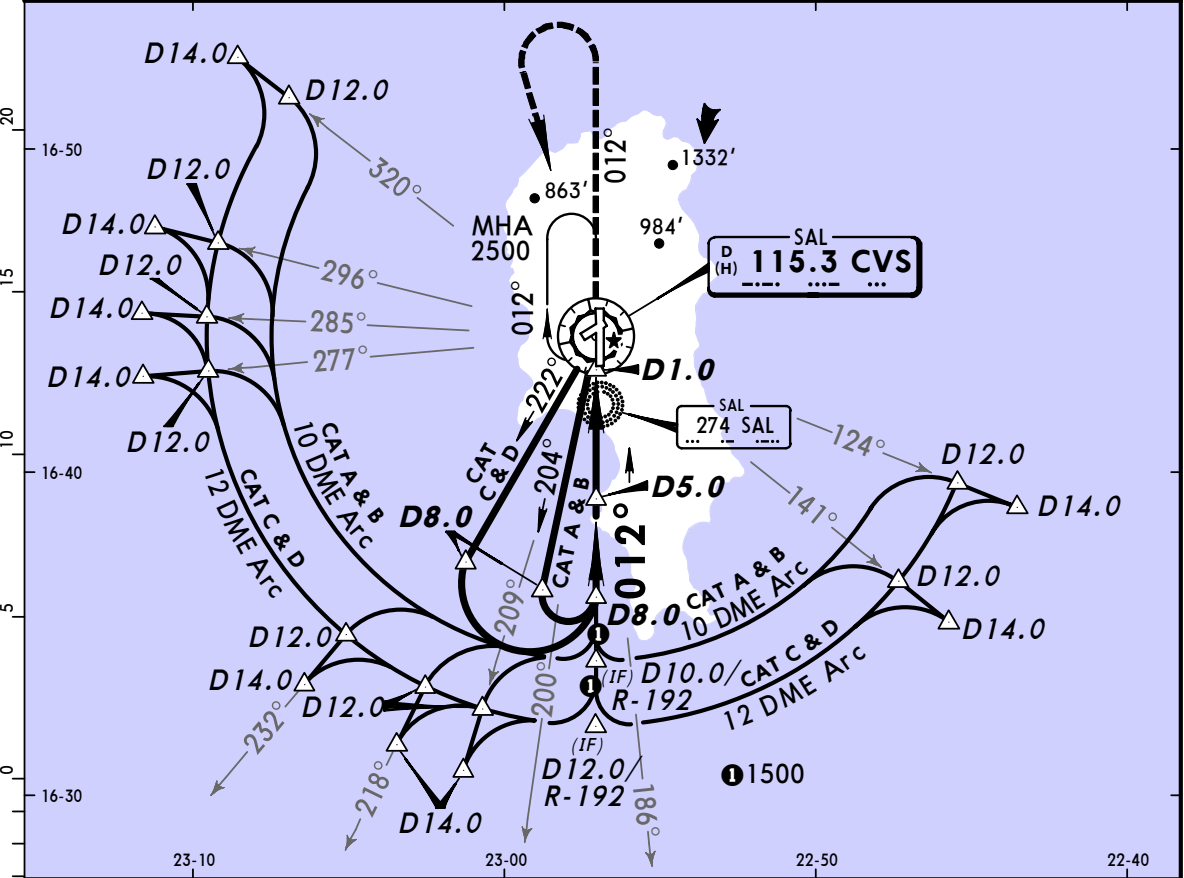
ATIS 119.1		SAL Approach (R) 119.7			AMILCABRAL Tower 119.7	
LOC SL 109.9	Final Apch Crs 012°	GS OM 1500' (1324')	ILS DA(H) 378' (202')	Apt Elev 177'	RWY 176'	
MISSED APCH: Climb on track 012° to 2500', then turn LEFT to NDB holding. Contact ATC. Climb to 1500' prior to level acceleration.						
Alt Set: hPa		Rwy Elev: 6 hPa	Trans level: By ATC		Trans alt: 6000'	
						MSA CVS VOR



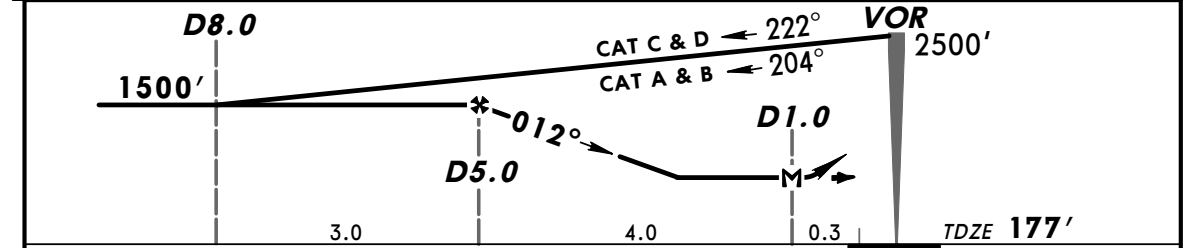
TO DISPLACED THRESHOLD						HIALS		2500' on 012°	
Gnd speed-Kts	70	90	100	120	140	160	PAPI		
ILS GS 3.00° or	377	484	538	646	753	861			
LOC Descent Gradient 5.2%									
MAP at MM									

STRAIGHT-IN LANDING RWY 01					CIRCLE-TO-LAND			
ILS		LOC (GS out)			West of rwy		East of rwy	
DA(H) 378' (202')		MDA(H) 540' (364')			MDA(H)		MDA(H)	
FULL		ALS out	MM out	ALS out	100		135	
800m		1200m	800m	1600m	930' (753') 1600m		930' (753') 1600m	
			NOT AUTH		135		1070' (893') 2000m	
					180		1560' (1383') 4800m	
					205		1930' (1753') 4800m	

ATIS 119.1		SAL Approach (R) 119.7		AMILCABRAL Tower 119.7		
VOR CVS 115.3	Final Apch Crs 012°	Minimum Alt D5.0 1500' (1323')	MDA(H) 540' (363')	Apt Elev 177' TDZE 177'		
MISSED APCH: Climb on track 012° to 2500', then turn LEFT to VOR holding. Contact ATC. Climb to 1500' prior to level acceleration.						
Alt Set: hPa		TDZ Elev: 6 hPa		Trans level: By ATC		Trans alt: 6000'



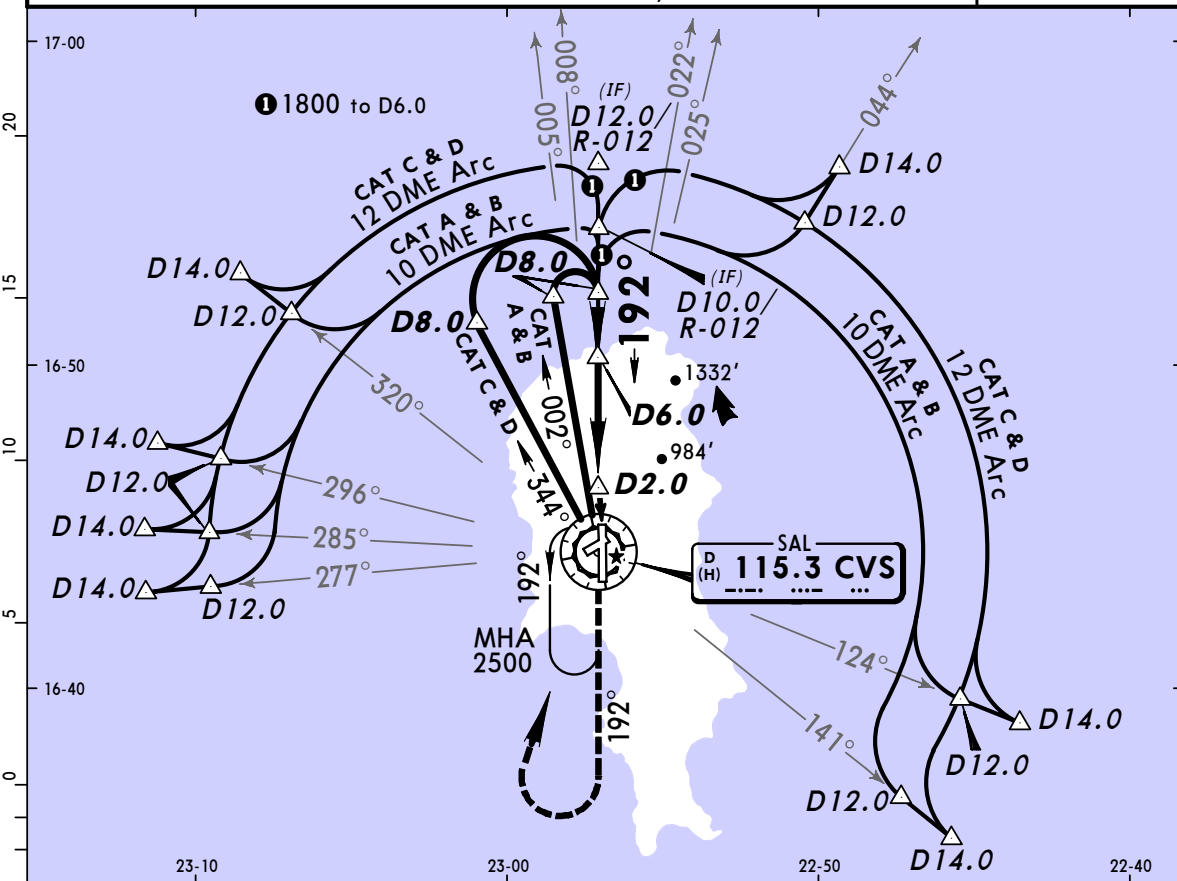
CVS DME	5.0	4.0	3.0	2.0
ALTITUDE	1500'	1200'	900'	600'



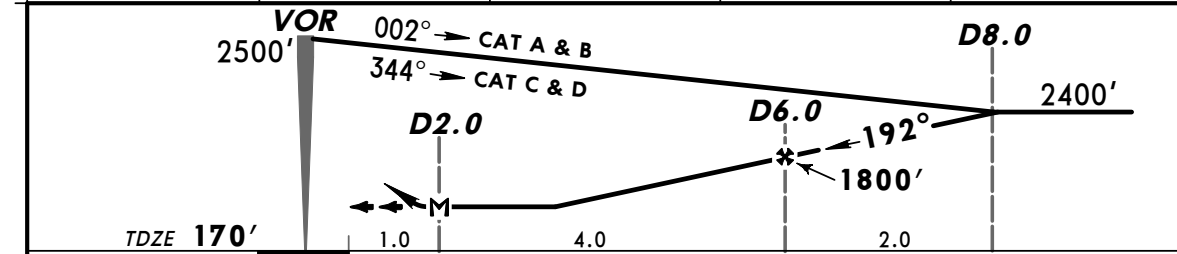
Gnd speed-Kts	70	90	100	120	140	160	
Descent Gradient 5.0%	354	456	506	608	709	810	
MAP at D1.0							

STRAIGHT-IN LANDING RWY 01			CIRCLE-TO-LAND	
MDA(H) 540' (363')			West of rwy	East of rwy
	ALS out		MDA(H)	MDA(H)
A			100 930' (753') 1600m	930' (753') 1600m
B	800m	1600m	135 930' (753') 2000m	1070' (893') 2000m
C			180 1460' (1283') 4800m	1560' (1383') 4800m
D	1600m	2000m	205 1460' (1283') 4800m	1930' (1753') 4800m

ATIS 119.1		SAL Approach (R) 119.7		AMILCABRAL Tower 119.7		
VOR CVS 115.3	Final Apch Crs 192°	Minimum Alt D6.0 1800' (1630')	MDA(H) 720' (550')	Apt Elev 177'	TDZE 170'	
MISSED APCH: Climb on track 192° to 2500', then turn RIGHT to VOR holding. Contact ATC. Climb to 1500' prior to level acceleration.						
Alt Set: hPa		TDZ Elev: 6 hPa		Trans level: By ATC		Trans alt: 6000'



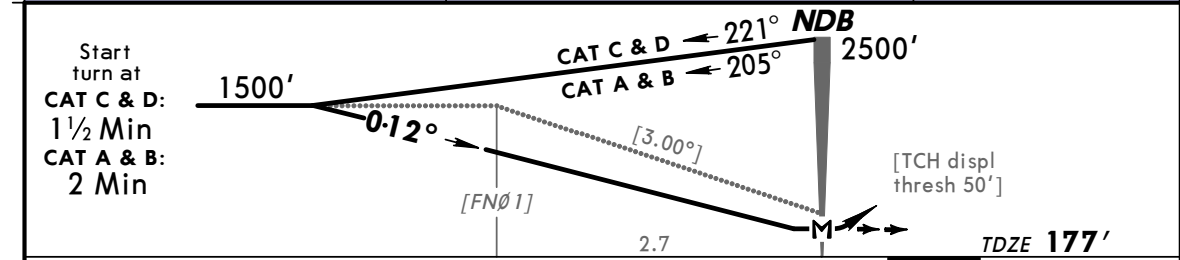
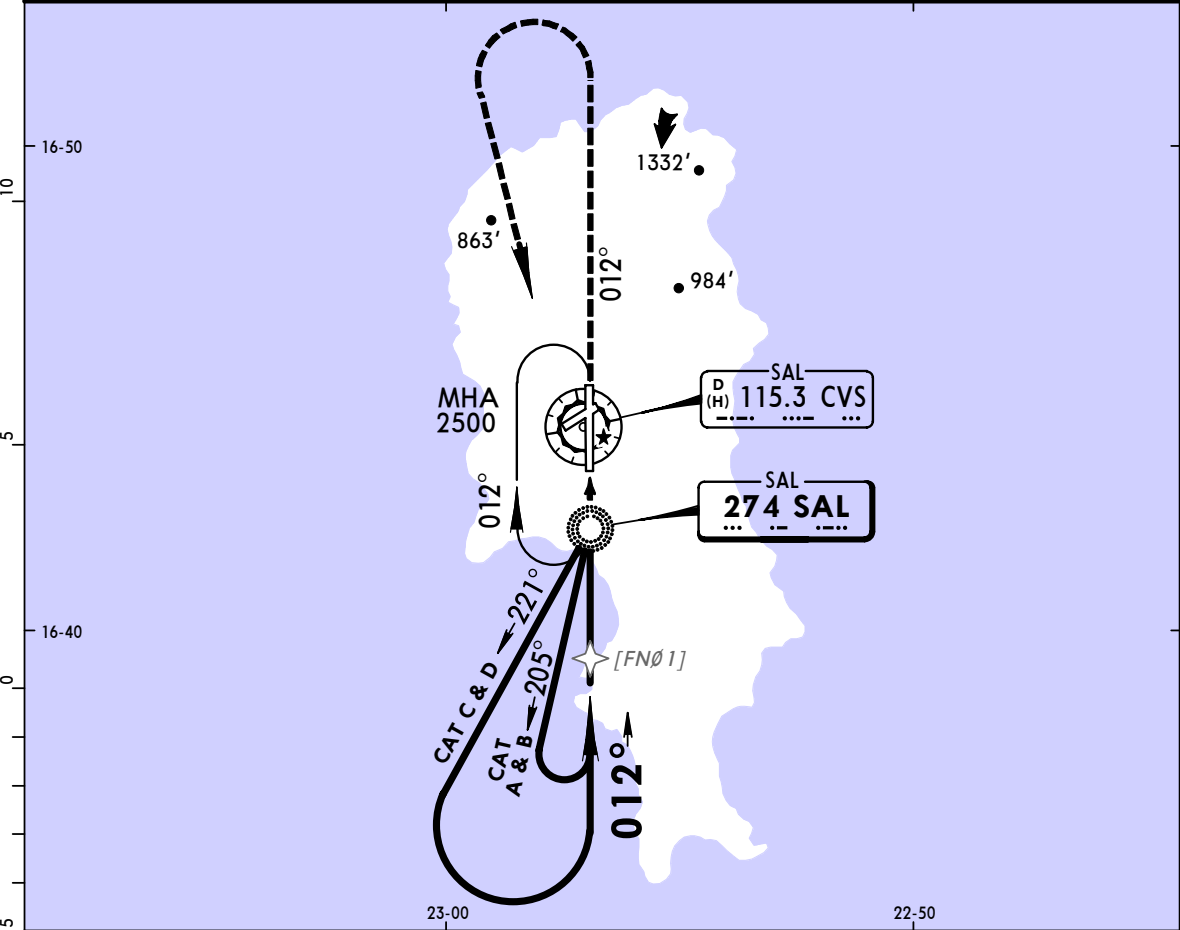
CVS DME	3.0	4.0	5.0	6.0
ALTITUDE	900'	1200'	1500'	1800'



Gnd speed-Kts	70	90	100	120	140	160		2500' ↑ on 192°
Descent Gradient 5.0%	354	456	506	608	709	810		
MAP at D2.0								

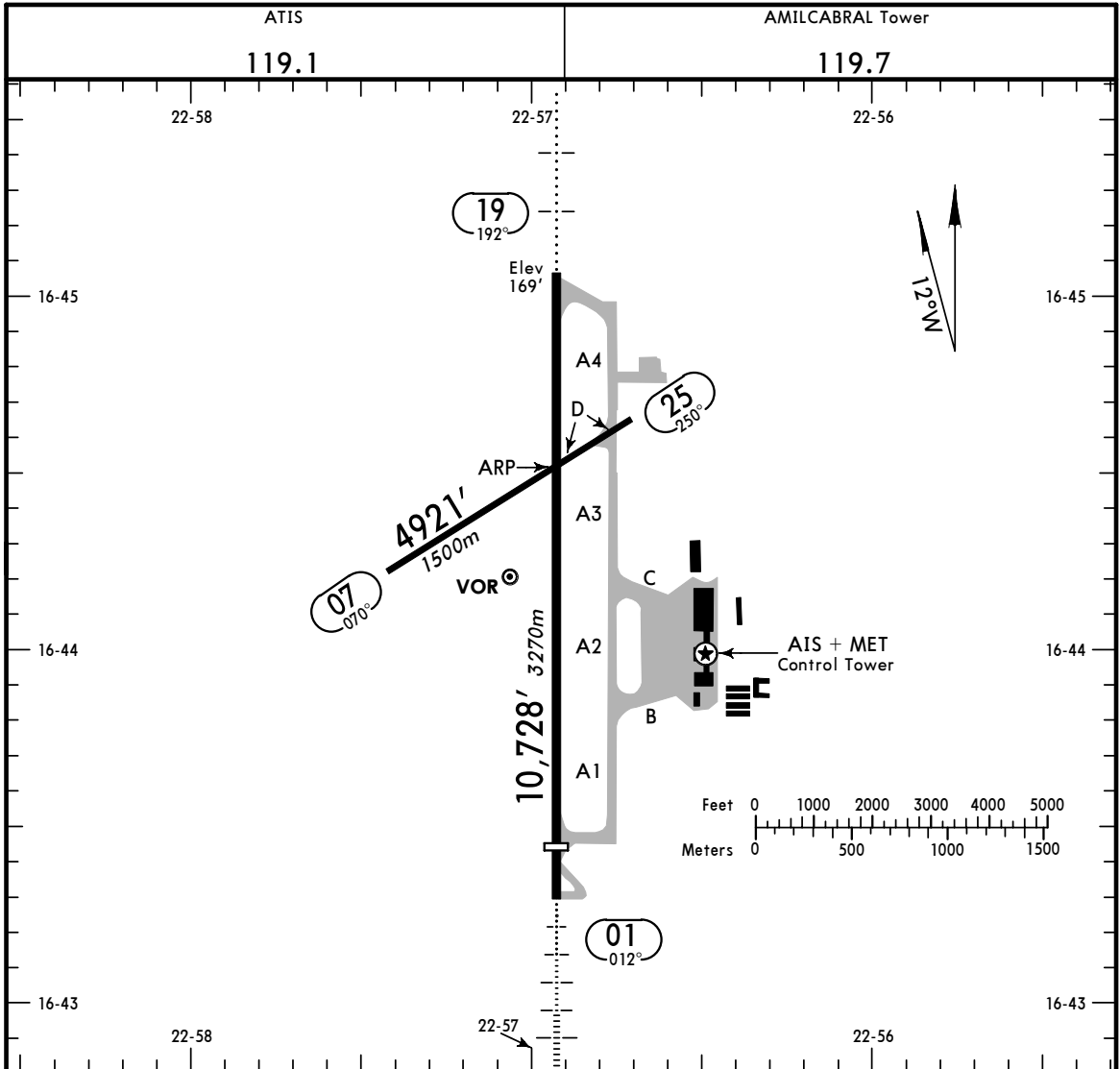
PANS OPS	STRAIGHT-IN LANDING RWY 19		CIRCLE-TO-LAND		
	MDA(H) 720' (550')		West of rwy	East of rwy	
	ALS out		Max Kts	MDA(H)	
A	1600m		100	930' (753') 1600m	930' (753') 1600m
B	2400m		135	930' (753') 2000m	1070' (893') 2000m
C	2800m		180	1460' (1283') 4800m	1560' (1383') 4800m
D			205	1930' (1753') 4800m	

ATIS 119.1		SAL Approach (R) 119.7		AMILCABRAL Tower 119.7		
NDB SAL 274	Final Apch Crs 012°	Minimum Alt No FAF	MDA(H) 550' (373')	Apt Elev 177'	TDZE 177'	
MISSED APCH: Climb on track 012° to 2500', then turn LEFT to NDB holding. Contact ATC. Climb to 1500' prior to level acceleration.						
Alt Set: hPa		TDZ Elev: 6 hPa		Trans level: By ATC		Trans alt: 6000'



TO DISPLACED THRESHOLD							
Gnd Speed-Kts	70	90	100	120	140	160	
Descent angle [3.00°]	372	478	531	637	743	849	
MAP at NDB							

STRAIGHT-IN LANDING RWY 01			CIRCLE-TO-LAND		
MDA(H) 550' (373')			West of rwy		East of rwy
	ALS out	Max Kts	MDA(H)		MDA(H)
A		100	930' (753')	2400m	930' (753')
B	1600m	135			1070' (893')
C		180	1460' (1283')	4800m	1560' (1383')
D	2000m	205			1930' (1753')



ADDITIONAL RUNWAY INFORMATION

RWY						USABLE LENGTHS		TAKE-OFF	WIDTH	
	HIRL (60m)	CL ①	HIALS	TDZ	PAPI-L (3.0°)	Threshold	Glide Slope			
01	HIRL (60m)	CL ①	HIALS	TDZ	PAPI-L (3.0°)	9842'	3000m	8816'	2687m	148'
19	HIRL (60m)	CL ①	ALS	TDZ	PAPI-L (3.0°)					45m
07										98'
25										30m

① spacing 30m, (white)

TAKE-OFF

AIR CARRIER (JAA) All Rwys			AIR CARRIER (FAR 121) All Rwys	
LVP must be in force			Adequate Vis Ref	
RL & CL	RCLM (DAY only) or RL	RCLM (DAY only) or RL		
A			2 Eng	VIS 400m
B	200m	250m	3 & 4 Eng	
C		400m		
D	250m	300m		